

AFON TEIFI


The Afon Teifi begins its journey on the eastern flanks of the Elenydd hills, in Llyn Teifi, the largest of six glacial lakes collectively known as the Teifi Pools. From here, the river flows southwest, straddling the borders of Ceredigion, Carmarthenshire and Pembrokeshire, before emptying into the Cardigan Bay SAC.

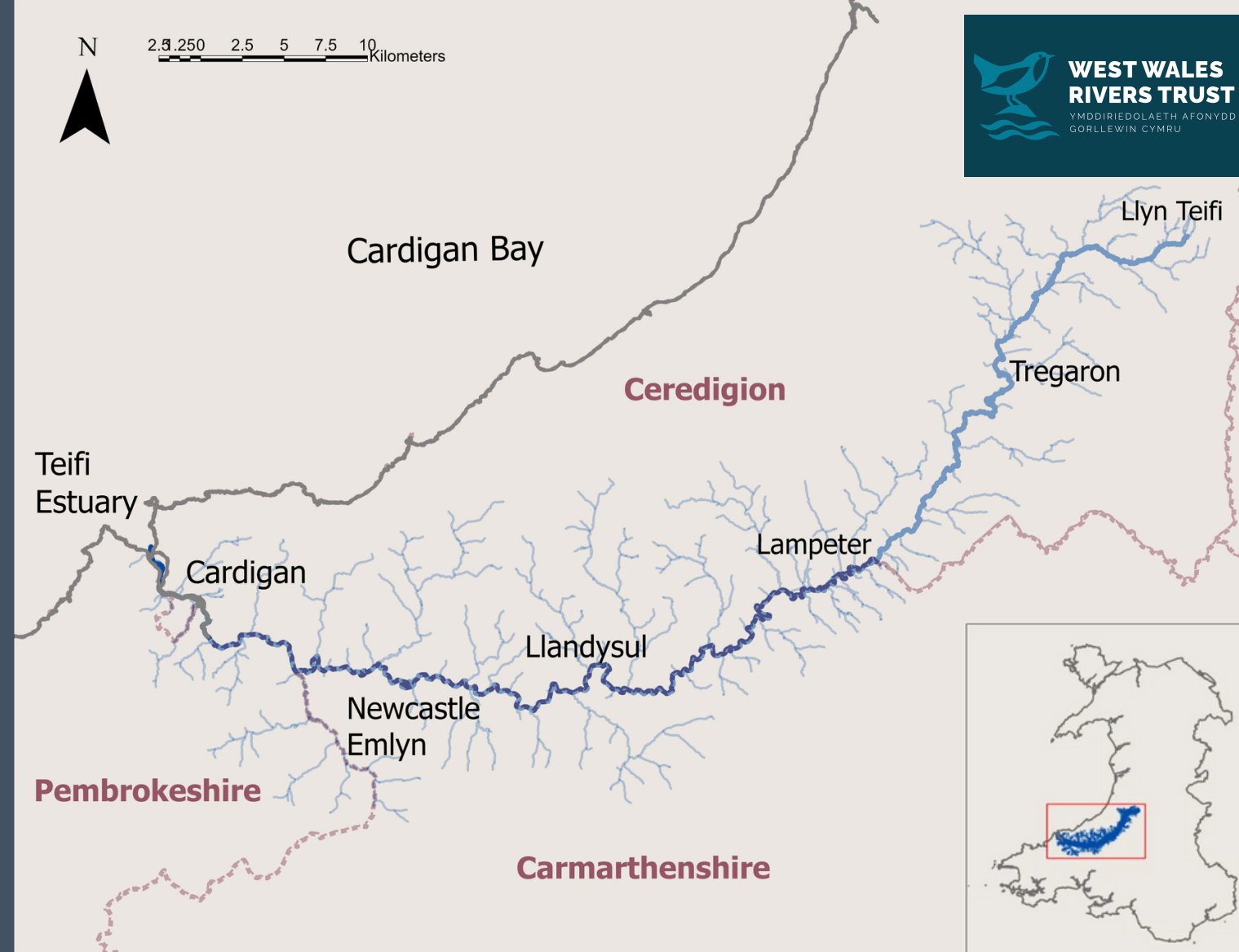
At 122km's from source to sea, the Teifi is one of the longest rivers in Wales. The whole river, including ten of its tributaries are designated as a Special Area of Conservation: the Groes, Brefi, Dulas, Grannell, Clettwr, Cerdin, Tyweli, Ceri, Cych and Piliau

SPECIAL AREA OF CONSERVATION

to protect designated species and habitats:

	Sea Lamprey		European Otter
	Brook & River Lamprey		Water Crowfoot
	Atlantic Salmon		Floating water-plantain
	Bullhead		Upland Oligotrophic Lakes

 The aim is to achieve a favourable conservation status for these species and habitats, which means that they are able to thrive sustainably. **Currently, less than half are in a favourable status.**



CATCHMENT AREA	LENGTH	RIVER SOURCE
1008 km²	122 km	LLYN TEIFI

NOT IN GOOD HEALTH

The health of our rivers is assessed using a range of ecological and chemical indicators. Under the Water Framework Directive, a river can be classified as High, Good, Moderate, Poor or Bad. High means close to natural conditions.

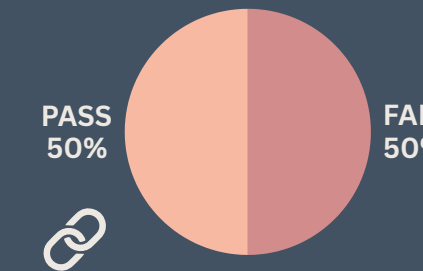
- Of the Teifi's 6 main stem waterbodies, **only 1 is in good overall health**. The remaining 5 are in moderate overall health.
- Of the 37 waterbodies in the wider Teifi catchment, **only 16 are in good overall health**.
- Of the Teifi's 10 SAC designated tributaries, **only 6 are in good overall health** (Groes, Brefi, Dulas, Cerdin, Tyweli, Cych).

WATER QUALITY

Significant failures to meet water quality targets have been reported in the lower Teifi, despite targets in this area being less stringent than other Welsh rivers.

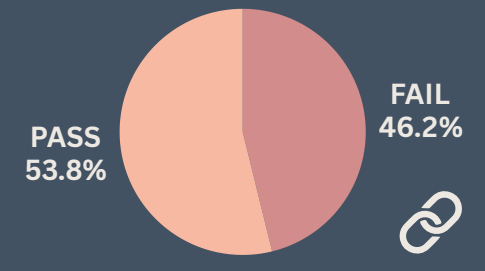
Attributes with the most widespread failures are Biochemical Oxygen Demand & Phosphorous.

PHOSPHORUS



50% of waterbodies assessed failed their Phosphorous targets

BOD



Nearly half of the waterbodies assessed for BOD failed their targets

These compliance failures are consistent with issues related to organic pollution and nutrient enrichment.

The Teifi catchment includes some intensive dairy farming areas. Large dairy units predominate in the lower reaches of the catchment.


PEOPLE'S PLAN FOR THE TEIFI

Your Perspective Matters



From lush landscapes to rich wildlife and vibrant communities, the Teifi is a lifeline that needs your voice.

WWRT are seeking community perspectives to help shape the future of the River Teifi!

Visit the WWRT website and have your say today 



This river Factsheet was compiled by Afonydd Cymru with support from the Esmée Fairbairn Foundation.

